



## Tuesday 11:15am - Adult Jazz - Bela

### "Pink Panthers" - The Pink Theme by Thomas Vent

---



#### **COSTUME DETAILS**

- Holographic foil dot spandex dress with side slits for ease of movement
- Spandex waistband with matching bow and faux buckle
- Attached bike shorts

**INCLUDES:** Spandex gloves, Rhinestone necklace, Rhinestone bracelet

**Shoes:** Tan any style

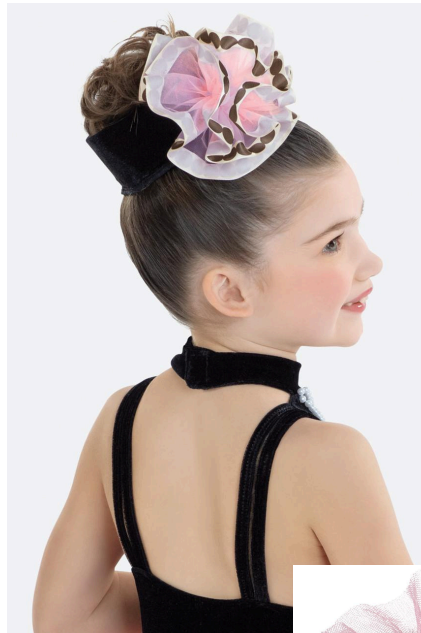
**Tights:** Dancers will provide their own tan tights.



## Tuesday 3:30 - Creative Ballet (3-4) - Ms. Linda

### "Friendship Pas de Deux" - Fancy Nancy+"Grown Up Like Me"

---



#### **COSTUME DETAILS**

- Stretch velvet dress with attached faux pearl necklace
- Attached organdy skirt edged in polka dot ribbon trim
- Attached spandex briefs

**INCLUDES:** Headpiece with elastic loops, Spandex gloves (we will not use the gloves in the show)

**Hedgehog Ballerina Stuffies will be dedicated to each individual dancer, kept at the studio for practice, used in the show, and then taken home to keep after the performance!**

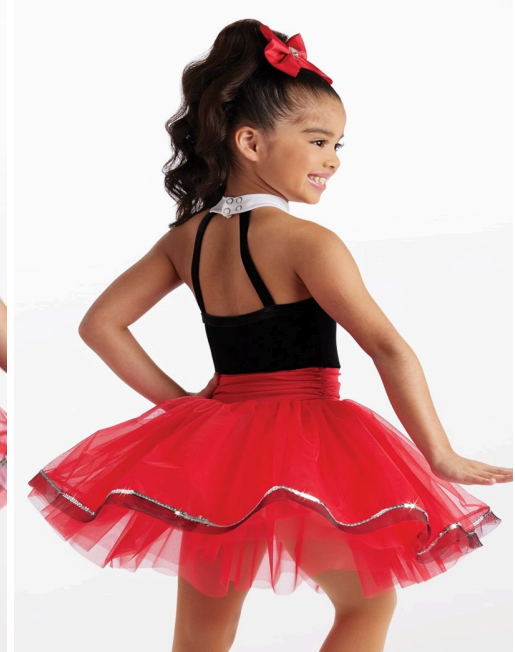
**Shoes:** Pink Ballet

**Tights:** "Ballet Pink" from JIM



## Tuesday 3:35 - Ballet Beg./Cont. (8-11) - Bela "Ballo Celebrativo" - Monde Inverse

---



### **COSTUME:**

- Dress has a velvet bodice with snap closure
- Accented with an array of premium crystals
- Ruffled front and cummerbund of shiny spandex
- Crinoline and sequin trimmed tricot skirt
- Attached briefs

**INCLUDES :** Bow hair clip, satin ribbon shoe bows.

**TIGHTS:** Pink provided by JIM

**SHOES:** Pink Ballet

**HAIR:** High bun



**Tuesday 3:40 - Tap Beg./Cont. (8-11) - Justin Cole**  
**"Shake It Off" - Taylor Swift**

---



**COSTUME:**

- Sequin spandex halter biketard has three layers of long, sequin fringe over black fringe
- G-hook closure at the neck
- All sizes are fully lined

**INCLUDES :** Rhinestone hair tie.

**SHOES:** Wear black tap shoes; JiM will provide black no-show socks

**NO TIGHTS**

**HAIR:** Any style



**Tues. 4:10 - Ballet & Tap (5-6) - Ms. Linda**  
**"Lion Sleeps Tonight"** (Ballet) - The Tokens  
**& "Walk the Dinosaur"** (Tap) - Was (Not Was)



**DRESS**

- Snap closure at the neckline
- Iridescent flip sequin mesh and spandex dress
- Attached foil dot spandex collar and back shoulder strap details
- Attached organdy skirt in alternating colors under an iridescent flip sequin mesh peplum
- Three-color tulle skirt

**VEST:** Faux-plush fuzzy fleece cotton bend

**INCLUDES:** Jeweled headpiece with clip

<p><b>TAP</b>  <b>Shoes:</b> Black Tap Shoes Any Style  <b>Costume:</b> With Vest</p>	<p><b>BALLET</b>  <b>Shoes:</b> Pink Ballet  <b>Costume:</b> Dress without Vest</p>
<p align="center"><b>BOTH DANCES</b>  <b>Tights:</b> "Tan" from JIM  <b>Hair:</b> Same Hair for the entire Show! Dancer's choice, pulled back out of face and sprayed neatly.  Ponytail, bun, 1/2 up 1/2 down, french braid, etc.</p>	



## Tuesday 4:35 - Tap Int./Adv. (13+) - Justin C. "The Greatest Show/This Joint Is Jumpin' "

---



### **COSTUME (in Black):**

- Two piece costume includes jumpsuit and vest
- Jumpsuit has sequin spandex front bodice
- Wide leg bottoms are made of shiny spandex
- Suit vest has satin lapel and hook-and-eye closure
- 

**INCLUDES :** Crossed rhinestone barrette.

**PROVIDE YOUR OWN BLACK TAP SHOES & BLACK SOCKS**

**HAIR:** High ponytail



## Tues. 4:35 - Contemporary Adv. (13+) - Bela "My Tears Ricochet" by Taylor Swift

---



### DETAILS

- Sequin spandex and mesh dress with side bodice cutouts
- Attached adjustable shoulder straps
- Elasticized waistband
- Attached mesh skirt with side slits for ease of movement
- Hook closure at the neckline
- Attached sequin floral appliqué WE ARE REMOVING THIS
- Attached matte spandex briefs
- Top-lined

**INCLUDES:** Sequin floral appliqué headpiece

**SHOES:** Tan contemporary shoes/"paws"/half soles

**KNEE PADS:** Tan

**HAIR:** High ponytail



**Tuesday 5:05 - Ballet & Tap (6-7) - Ms. Linda**  
**"The Codfish Ball" (Tap) - John Lithgow**  
**& "Raven" (Ballet) - Jewel**



**LEOTARD:** Spandex leotard, Sequin mesh overlay, Stretch satin inset panel on the front bodice, Spandex strap detail & Front-lined

**SHRUG:** Stretch satin shrug with tulle puff sleeves & Hook closure at the neckline

**SKIRT:** Stretch satin skirt edged in horsehair & Elasticized waistband

**TUTU:** Stiff tulle, Three layers, 2.25" matte nylon/spandex waistband

**INCLUDES:** Satin hair bow with clip

<p><b>TAP</b>  <b>Shoes:</b> Black Tap Shoes Any Style  <b>Costume:</b> Blue Skirt and Shrug</p>	<p><b>BALLET</b>  <b>Shoes:</b> Pink Ballet  <b>Costume:</b> Black Tutu</p>
<p align="center"><b>BOTH DANCES</b></p> <p align="center"><b>Tights:</b> Tan provided by JIM for both</p> <p><b>Hair:</b> Same Hair for the entire Show! Dancer's choice, pulled back out of face and sprayed neatly. Ponytail, bun, 1/2 up 1/2 down, french braid, etc.</p>	





## Tuesday 5:50 - Jazz Adv. (13-17) - Bela "Groove is in the Heart" by Deee-Lite

---



### **DETAILS:** TWO-PIECE COSTUME

#### **CROP TOP**

- Spandex and sequin fringe mesh crop top
- Snap closure at the neckline
- Spandex and sequin fringe mesh long sleeves
- Keyhole back
- Lined mesh hemline detail

#### **SKIRT**

- Spandex and iridescent sequin fringe skirt
- Lined mesh waistband detail
- Attached fully lined spandex briefs

**INCLUDES:** Rhinestone ponytail cuff

**SHOES & TIGHTS:** Tan convertible tights & black jazz shoes

**HAIR:** High ponytail



**Tuesday 6:05 - Jazz Beg./Cont. (8-11) - Ms. Linda**  
**"I Need You" - Jon Batiste**

---



**DETAILS**

- Spandex and mesh dress
- Hook closure at the neckline
- Paillette flip sequin mesh front bodice overlay(Sequin pattern may vary)
- Lined mesh front bodice inset
- Attached elasticized back strap details
- Attached layered fringe skirt

**INCLUDES:** Metal ponytail cuff

**SHOES & TIGHTS:** Black Jazz Shoes & Tan Tights

**HAIR:** High ponytail or any style that works with your hair & the ponytail cuff and hair is up off your neck



## Tuesday 6:50 - Ballet Int./Adv. (13+) - Bela "Upon Reflection Pond" - Petards Chinois

---



### DETAILS

- Satin, mesh, jacquard, and spandex dress
- Hook closure at the neckline
- Neckline cutout with attached frog detail
- Stretch satin bodice with front and back metallic jacquard insets(Jacquard pattern may vary)
- Keyhole back
- Attached glitter tulle, organdy, and net skirt under a stretch satin peplum edged in metallic jacquard
- Attached spandex briefs
- Fully lined

**INCLUDES:** Floral headpiece with clip

**SHOES & TIGHTS:** pink tights & pink ballet shoes

**HAIR:** High ponytail

FINALE - All Dancers in ALL Classes!

Get The Party Started



**2024 FINALE!! - Each dancer will need a JIM Shirt of their choice**

Dancers will provide the rest of the outfit (pants, shorts, skirt, etc.) and accessorize with their own creativity in JIM colors (black, white, yellow, teal/aqua)

**Shoes:** Jazz, Hip Hop, or any street shoes that work

**Hair:** Same hair from previous dance

Let **JOY** Move You!